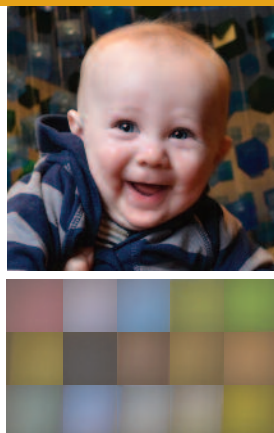


 **St. Joseph's**
Healthcare System
St. Joseph's is **THE FUTURE**

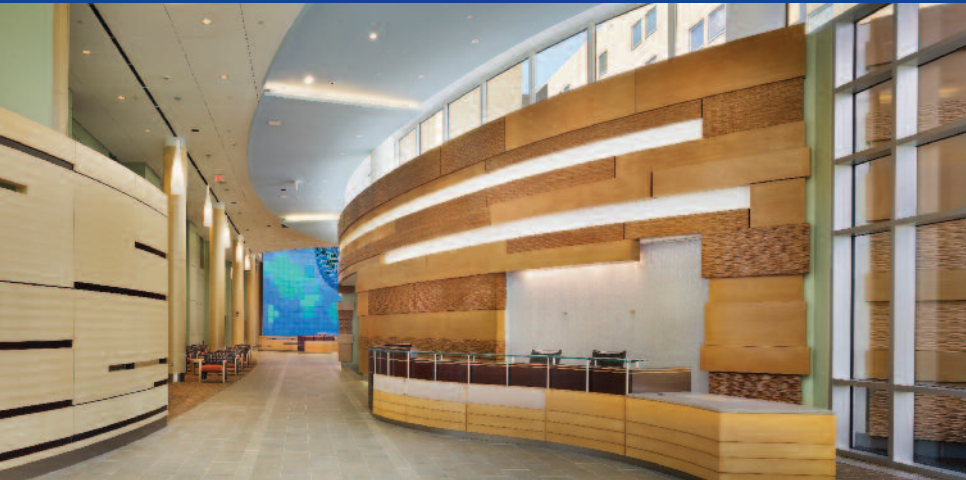


THE CAMPAIGN FOR ST. JOSEPH'S HEALTHCARE SYSTEM



WE'RE BUILDING
a healthy community

THREE YEARS AGO,
we embarked on an ambitious journey...



THE NEW LOBBY



THE CRITICAL CARE BUILDING

Dear Friends of St. Joseph's,


Big things are happening at **St. Joseph's Healthcare System**. If you've been by, you've seen our cranes and hard hats. We are in the midst of a \$250 million, five-year facilities expansion and renovation investment project.

Here's what we've accomplished already...and what's still to come:

- A **warm and inviting lobby** that welcomes patients and their families – and a **special women's and children's waiting area**
- **New, upgraded patient rooms** that enhance comfort and privacy
- A spacious **new Critical Care Building** with 54 additional critical care rooms and 12 state-of-the-art operating rooms to accommodate the technology and people needed for today's sophisticated procedures
- A new **rooftop heliport** where the largest medical helicopters in the tri-state area can land – making St. Joseph's the place to go in crisis situations
- A state-of-the-art **Conference Center** equipped for video teleconferencing
- The new **DePaul Ambulatory Care Center** on Getty Avenue that creates a welcoming and convenient home for our outpatient visitors
- A superior environment of care that matches the superior quality of our clinical care – and expands the health services available to our community

A healthy hospital has a caring, committed community. At St. Joseph's, we are blessed to be surrounded by dedicated staff, volunteers and community members. I hope you will consider supporting the **St. Joseph's is THE FUTURE** campaign and help us continue our commitment to quality healthcare for our region.

Sincerely,



William A. McDonald
President and Chief Executive Officer
St. Joseph's Healthcare System

A SHARED VISION *of caring*

In 1867, the Sisters of Charity of Saint Elizabeth opened St. Joseph's Hospital on Church Street in Paterson – with 12 beds. Last year, with nearly 1,000 beds, St. Joseph's Healthcare System cared for more than 1.7 million patients.



And while we have evolved into a state-of-the-art leader in clinical and surgical care, we continue to fulfill a critical need in our community – providing needy and underserved patients with the best healthcare possible.

We couldn't do this without a community that shares the Sisters' original goal to help those in need. By supporting the **St. Joseph's is THE FUTURE** campaign, you can help continue this legacy of care – and a shared vision of caring – in our community.

*...you can help continue
this legacy of care in our community...*

Our Mission

In the spirit of *Toward Boundless Charity*, the Mission of the St. Joseph's Healthcare System, a ministry of healing in the Catholic Church and sponsored by the Sisters of Charity of Saint Elizabeth, is to render quality healthcare in northern New Jersey with a special concern for the poor and underserved.

Our Vision

St. Joseph's Healthcare System will be recognized as a leading healthcare provider of choice in New Jersey. It will be characterized by the excellence of its healthcare services, its focus on compassionate care of its patients, and by a culture of continuous quality improvement.

Our Values

Dignity. We respect each person at every stage of development as created by God.

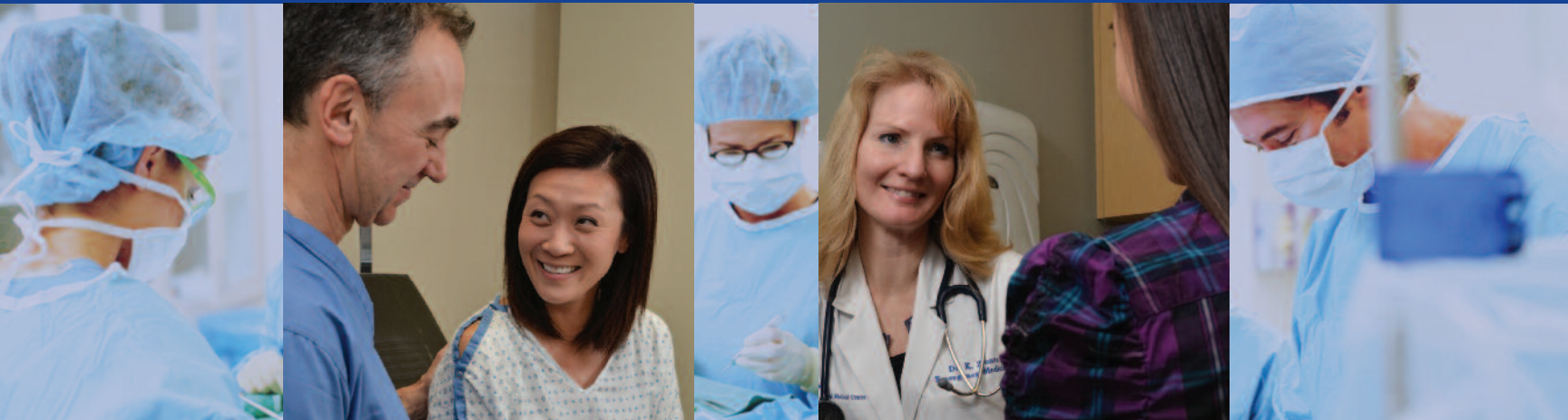
Justice. We advocate for the needs of the most vulnerable. We operate at all levels in an ethical manner, with fairness, honesty, and confidentiality.

Excellence. We enable the highest performance through ongoing growth and development with a commitment to quality, openness to new ideas, accountability to standards, and working together to achieve goals.

Stewardship. We use our resources, both human and financial, in a responsible manner with a special commitment for the care of the poor.

WORLDCLASS HEALTH CARE

right here at home



- First successful separation of conjoined twins in New Jersey
- First cervical disc replacement in the state
- Clinical collaboration with St. Jude Children's Research Hospital using new high definition Telemedicine Suite at St. Joseph's Children's Hospital
- State-licensed Comprehensive Stroke Center with additional Joint Commission Primary Stroke Center Certification offering state-of-the-art lifesaving care
- Recognized since 1999 as a Magnet for Nursing Excellence Award facility, St. Joseph's Regional Medical Center is the only Magnet organization worldwide to receive The 2010 Magnet Prize™ for innovative nursing practice
- One of only 3 New Jersey facilities to receive accreditation for its EEG lab from the American Board of Registration of Electroencephalographic and Evoked Potential Technologists (ABRET)
- The first hospital in the state to implement cardiac therapeutic cooling in the field; honored for innovations in therapeutic cooling in pre-hospital and hospital settings
- The first hospital in NJ and one of 33 hospitals nationwide to earn the American Heart Association's 'Get With The Guidelines' Triple Gold Award for quality improvement achievement in all three GWGTG modules (Heart Failure, Coronary Artery Disease and Stroke) and Gold Plus Achievements in Heart Failure and Stroke

- Among the top 5% of hospitals – one of only 98 hospitals nationwide – to receive the Pediatric Patient Safety Excellence Award from HealthGrades
- Recipient of the 5-Star Rating for Excellence in Maternity Service from HealthGrades
- Opened the first dedicated Geriatric Emergency Department (SrED) in the Northeast, a model for others nationwide
- Leading the New York Metropolitan Region, SJRMC earned Joint Commission Advanced (Congestive) Heart Failure (HF) Certification, the new highest level of achievement in HF care
- Host of the International Conference on Behavioral Health and Traumatic Brain Injury (TBI) and a regional leader in Traumatic Brain Injury, St. Joseph's Brain Injury Center offers the most progressive array of treatment options for mild concussion to severe TBI
- The first hospital in the region to offer our oncology patients the additional guidance of the American Cancer Society's Patient Navigator Program
- Providers of the largest hospital-based pediatric and adult dialysis programs on the East Coast

CENTERS OF EXCELLENCE

Thanks to support from our community, St. Joseph's has come a long way since 1867. Over a century later, we are the region's leading healthcare provider. As an academic institution, we teach tomorrow's physicians and clinicians. We provide the care of a state-designated Trauma Center. We operate a full service children's hospital, as well as the largest outpatient dialysis center in the region.

Telemedicine Program

Feeding and Swallowing Center

Alfiero & Lucia Palestroni Birth Defects Center

The Sleep Center

Regional Craniofacial Center

Geriatric Emergency Department (SrED)

Epilepsy Center

Women's Heart Center

With your help, St. Joseph's will continue to make major advances in research, clinical and patient care – and will be part of the lives of many families for generations to come.

A NEW ENVIRONMENT *of care*

As the region's leading healthcare system, St. Joseph's is experiencing rapid, record-breaking growth.

In 2010 alone, there were:

- More than 1.7 million outpatient procedures and visits
- Nearly 200,000 patient days
- More than 145,000 emergency department visits



To accommodate this growing need for services in our community, St. Joseph's launched a five-year, \$250 million expansion and renovation investment project.

Already, we have:

Paterson

St. Joseph's Regional Medical Center/St. Joseph's Children's Hospital

- Opened the new DePaul Ambulatory Care Center. Located at 11 Getty Avenue, the new center offers facilities for outpatient adult and pediatric subspecialty services
- Completed the renovation of the main lobby and the women's and children's waiting area
- Opened the new state-of-the-art conference center
- Opened new Physician's Lounge and Executive Board Room

Wayne

St. Joseph's Wayne Hospital

- Replaced and expanded two surgical suites, and renovated the pre-operative and post-operative areas; opened 600-square foot, state-of-the-art operating rooms featuring systems-integrated technology
- Renovated and expanded the Critical Care Unit
- Renovated and updated the main lobby

As these – and more – facilities come on line, they need to be outfitted and furnished with leading edge equipment, advanced technology and comfortable amenities. The **St. Joseph's is THE FUTURE** capital campaign is raising the funds necessary to optimize these new facilities – facilities that are both the hub of care and a source of pride for our community.

*...the hub of care and a source of pride
for our community...*

FACILITY PLANS

St. Joseph's Regional Medical Center/St. Joseph's Children's Hospital

- Construction of a new 173,798-square foot Critical Care Building that features new surgical suites and critical care units, as well as adult and pediatric emergency departments
- Cosmetic upgrades to all patient rooms, increased single-patient rooms and renovations to nursing stations on patient care units
- Construction of a new rooftop helistop
- Complementary partnership to construct a new 1,122-car parking garage

St. Joseph's Wayne Hospital

- Cosmetic upgrades to all patient rooms and increased single-patient rooms
- Renovations to nursing stations on patient care units

Other Exciting Things Happening Around St. Joseph's Healthcare System

- Planned future construction of a luxury hotel at St. Joseph's Regional Medical Center, through a partnership between MMC Worldwide, St. Joseph's Healthcare System, and the City of Paterson. This modern facility will feature 7 floors of top flight accommodations, full catering services, and conference space
- St. Joseph's has been designated as Master Developer for the new Rehabilitation Zone within Paterson's Area 11 – and is responsible for overseeing all new developments within the zone to create an environment that welcomes consumers and provides increased value to the city
- Over 206,000 sq. ft. of new development is proposed or underway in Area 11 – including an adult day care and senior housing complex, market rate housing, and professional office, medical office, commercial and retail space
- Joint Venture to construct a freestanding cancer center on the St. Joseph's Wayne Hospital campus
- Renovation of the Women and Children's Tower at St. Joseph's Regional Medical Center
- Additional external enhancement of services at St. Joseph's Wayne Hospital

THE HEALTH
OF OUR COMMUNITY
IS PRICELESS

So, too, is your support

Every year, nearly two million patients turn to St. Joseph's for medical care – care that often saves their lives. But demand for services at St. Joseph's exceeds our current capacity. That's why we launched St. Joseph's is THE FUTURE, a \$50 million campaign designed to help us meet the growing need for healthcare in our region.

**We hope you will join us
in our mission of care**

By contributing to the expansion and enhancement of St. Joseph's, you'll be making an important investment in the health – and future – of our community. You'll help save lives and improve care for children, trauma victims, cardiac patients and everyone who comes to our door for lifesaving treatment. And you'll help continue a long legacy of healing, hope and compassion started by the Sisters of Charity of Saint Elizabeth.

Please make
a donation
TODAY.

Now more than ever,
your help is needed
to maintain the
exceptional services,
facilities and programs
at St. Joseph's.

We welcome
contributions of
any size – and
it's easy to help.



To make a donation
to the capital campaign,
please contact the
Development Office at
973.754.4400

www.StJosephsHealth.org/donate

A Member of St. Joseph's Healthcare System
877.757.5JHS (7547) • 703 Main Street, Paterson, NJ
Sponsored by the Sisters of Charity of Saint Elizabeth