

St. Joseph's Children's Hospital, the second oldest Children's Hospital in New Jersey, provides within its walls the full spectrum of pediatric services that creates a comprehensive medical home for the treatment of children and young adults with cancer and blood disorders.

- Pediatric Intensive Care
- Pediatric Allergy & Immunology
- Pediatric Cardiology/Cardiac Surgery
- Pediatric Craniofacial Center
- Pediatric Development and Behavior
- Pediatric Emergency Department
- Pediatric Endocrinology
- Pediatric Feeding and Swallowing Center
- Pediatric Genetics
- Pediatric Gastroenterology
- Pediatric Infectious Disease
- Pediatric Nephrology
- Pediatric Neurology
- Pediatric Neurosurgery
- Pediatric Pulmonology
- Pediatric Orthopedics
- Pediatric Sedation Services
- Pediatric Surgery
- Pediatric Radiology
- Radiation Oncology
- Child Protection and Safety

## Directions to St. Joseph's Children's Hospital

### From the East:

Rt. 80 West to Exit 58A (Madison Avenue, Clifton) onto Madison Ave. At the 2nd light make a right onto Main Street. Continue on Main Street to our parking facilities on the right.

### From the South:

Garden State Parkway (GSP) North to Exit 155P (on left) onto Route 19. Take the first exit, and turn right onto Broad Street. Go through one light, and bear left just after passing under the railroad trestle. Turn right at the light onto Levine Street. At the stop sign, make a left onto Main Street. Continue on Main Street to our parking facilities on the right.

### From the North:

GSP South to Route 80 West. Then as above from the East.

### From the West:

Rt. 80 East to Exit 58A (Madison Avenue, Clifton) to Madison Avenue. Proceed as above, from the East.



## St. Joseph's Children's Hospital

An acute care specialized state designated children's hospital at St. Joseph's Regional Medical Center

## St. Joseph's Healthcare System

703 Main Street  
Paterson, New Jersey 07503  
973.754.2500  
[www.StJosephsHealth.org](http://www.StJosephsHealth.org)

A Member of St. Joseph's Healthcare System  
Sponsored by the Sisters of Charity of Saint Elizabeth



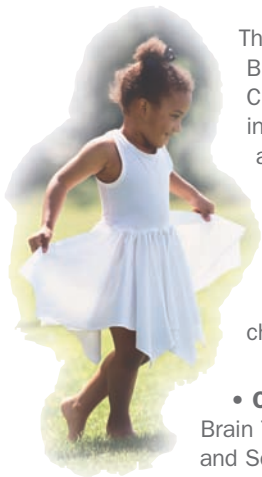
Twice-awarded the American Nurses Credentialing Center's Magnet Award for Nursing Excellence

# The Center for Pediatric Cancer and Blood Disorders

at St. Joseph's Children's Hospital

St. Joseph's Regional Medical Center  
Xavier 7  
703 Main Street  
Paterson, NJ 07503  
Phone: 973.754.3230  
Fax: 973.754.3331





The Center for Pediatric Cancer and Blood Disorders at St. Joseph's Children's Hospital was established in 1996 to bring the highest quality academic medical care to the Northern New Jersey community. We specialize in the evaluation and treatment of a wide spectrum of hematologic and oncologic conditions affecting children and young adults including:

- **Cancers:** Leukemia, Lymphoma, Brain Tumors, Neuroblastoma, Bone and Soft Tissue Tumors, Wilms Tumors, Liver Tumors, Germ Cell Tumors, and other pediatric malignancies
- **Hemoglobinopathies:** Sickle Cell Anemia and Thalassemia
- **Anemias:** Congenital and Acquired
- **Hypercoagulable/Prothrombotic Conditions**
- **Bleeding disorders:** Von Willebrand Disease, Hemophilia and other Coagulation Pathway Deficiencies
- **Platelet disorders:** Quantitative and Qualitative
- **White Blood Cell Disorders:** Neutropenia and Histiocytoses

## Our Team

- Four Physicians Board Certified in both Pediatrics and Pediatric Hematology/Oncology
- Nurse Manager
- Pediatric Nurse Practitioner
- Staff Nurses
- Child Life Specialist
- Social Worker
- Clinical Research Coordinator
- Certified Medical Assistant

## Our Multidisciplinary Partners

- On site Pediatric Neurosurgery
- On site Pediatric Surgery
- On site Radiation Oncology Services
- One of the largest and most comprehensive Pediatric Intensive Care Units in the area

Patients are seen in our family-centered out-patient and inpatient facilities, allowing patients, their families and our team to coordinate efforts to provide the most compassionate and comprehensive care possible.

Our staff takes pride in our ability to meet the needs of our culturally and religiously diverse community and makes every effort to recognize each individual's and family's values, coping styles and beliefs.

Our Complementary Therapies Program allows our patients access to various treatment modalities such as aromatherapy, acupuncture and massage therapy.

Communication with each referring provider is provided throughout the consultation and treatment process to ensure continuity of patient care.

## Affiliations and Collaborations

### Columbia University, College of Physicians & Surgeons

Our long-standing affiliation with Columbia reflects the high quality academic medical care that our patients receive at St. Joseph's. Most of our physicians have academic appointments and attend weekly tumor boards and clinical conferences there, allowing for discussion of difficult cases and a mutual exchange of ideas and information.

### St. Jude's Children's Research Hospital

This unique collaboration is the only one of its kind in the Northeast. Via high definition telemedicine, we attend weekly disease specific conferences and tumor boards with our colleagues in Memphis, in order to collaborate on cutting edge research.

### Children's Oncology Group (COG)

St. Joseph's is a full member of COG, the premier collaborative group of more than 200 pediatric oncology centers nationwide. As members of COG, we offer our patients the latest innovative treatments including chemotherapy, radiation oncology and complementary medicine protocols.



**Jill S. Menell, MD, Chief**

#### Medical Education:

SUNY, Downstate Medical Center

#### Residency:

Kings County Hospital, NY

#### Pediatric Hematology/Oncology Fellowship:

Memorial Sloan Kettering Cancer Center

#### Faculty Appointments:

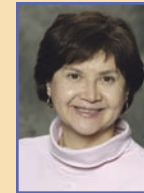
St. Joseph's Children's Hospital Columbia University, College of Physicians and Surgeons

#### Clinical Expertise:

Pediatric Hematology/Oncology, Sickle Cell Anemia/Hemoglobinopathies, Platelet Disorders, End of Life Care

#### Foreign Languages Spoken:

Spanish



**Mary Ann Bonilla, MD**

#### Medical Education:

Loyola University Stritch School of Medicine

#### Residency:

Brookdale Hospital, NY

#### Pediatric Hematology/Oncology Fellowship:

Memorial Sloan Kettering Cancer Center

#### Faculty Appointments:

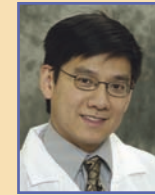
St. Joseph's Children's Hospital Columbia University, College of Physicians and Surgeons

#### Clinical Expertise:

Pediatric Hematology/Oncology, White Blood Cell Disorders, Complementary Medicine

#### Foreign Languages Spoken:

Spanish



**Dennis J. Kuo, MD**

#### Medical Education:

University of California, San Francisco

#### Residency:

New York University

#### Pediatric Hematology/Oncology Fellowship:

Stanford University, Lucile Packard Children's Hospital

#### Faculty Appointments:

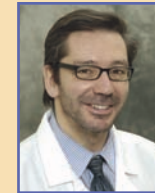
St. Joseph's Children's Hospital; Columbia University, College of Physicians and Surgeons

#### Clinical Expertise:

Pediatric Hematology/Oncology, Leukemia/Lymphoma, Cancer Survivorship

#### Foreign Languages Spoken:

Spanish and Mandarin Chinese



**Rafael Barilari, MD**

#### Medical Education:

University of Buenos Aires

#### Residency:

St. Agnes Hospital (Argentina); Georgetown University

#### Pediatric Hematology/Oncology Fellowship:

Long Island Jewish Hospital

#### Faculty Appointments:

St. Joseph's Children's Hospital

#### Clinical Expertise:

Pediatric Hematology/Oncology, Bleeding Disorders, Hemostasis/Thrombosis

#### Foreign Languages Spoken:

Spanish and Portuguese